

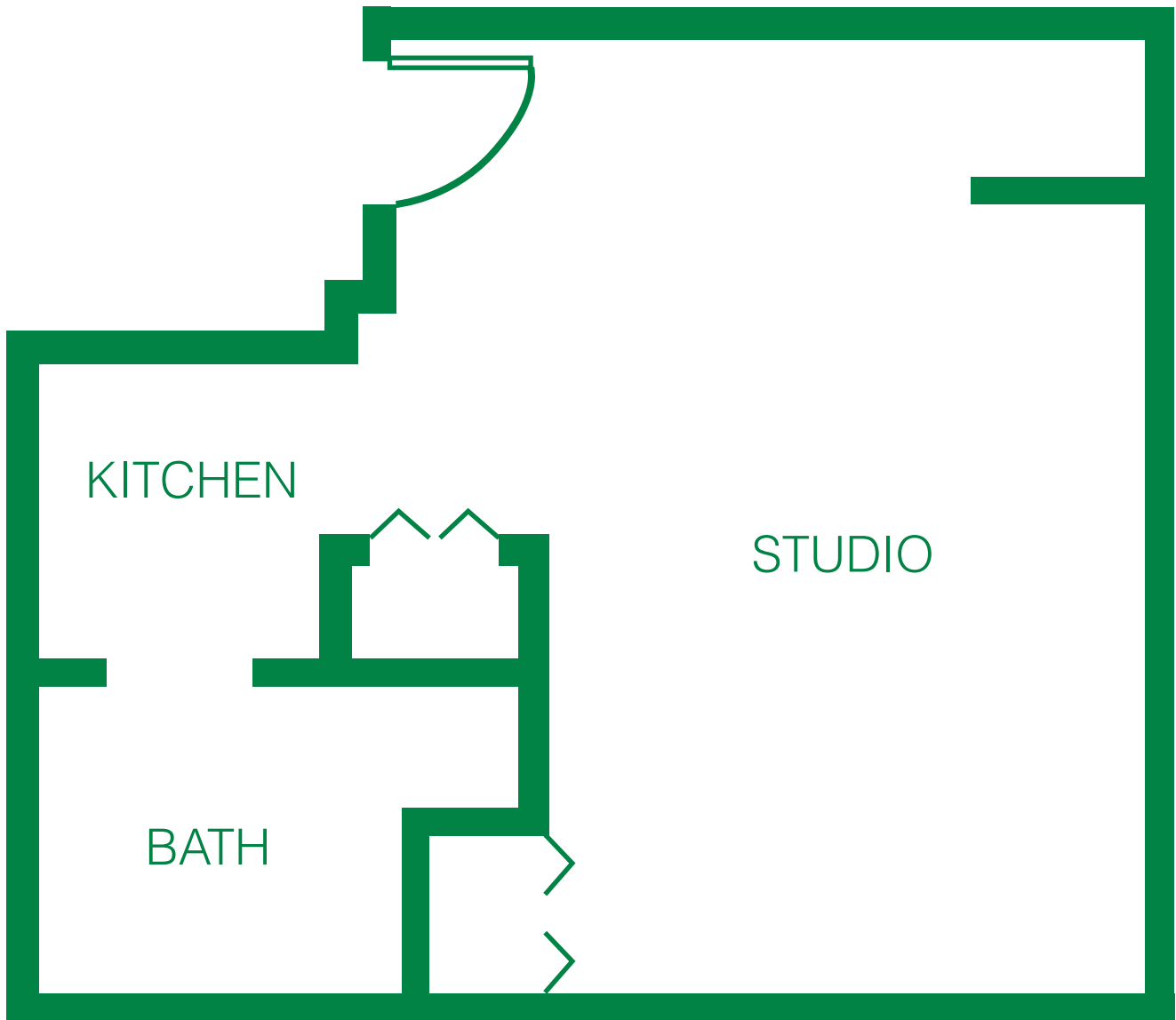


Gentry Park Orlando
ASSISTED LIVING & MEMORY CARE

Assisted Living Private Residence

Sawgrass

Studio 363 sq. ft.



GentryParkOrlando.com

3201 Center Pointe Drive | Orlando, FL 32825

Information Center | 1802 N. Alafaya Trail | Orlando, FL 32826

(407) 382-1002 | email: Info@GentryParkOrlando.com

Managed by  Life Care Services™

