

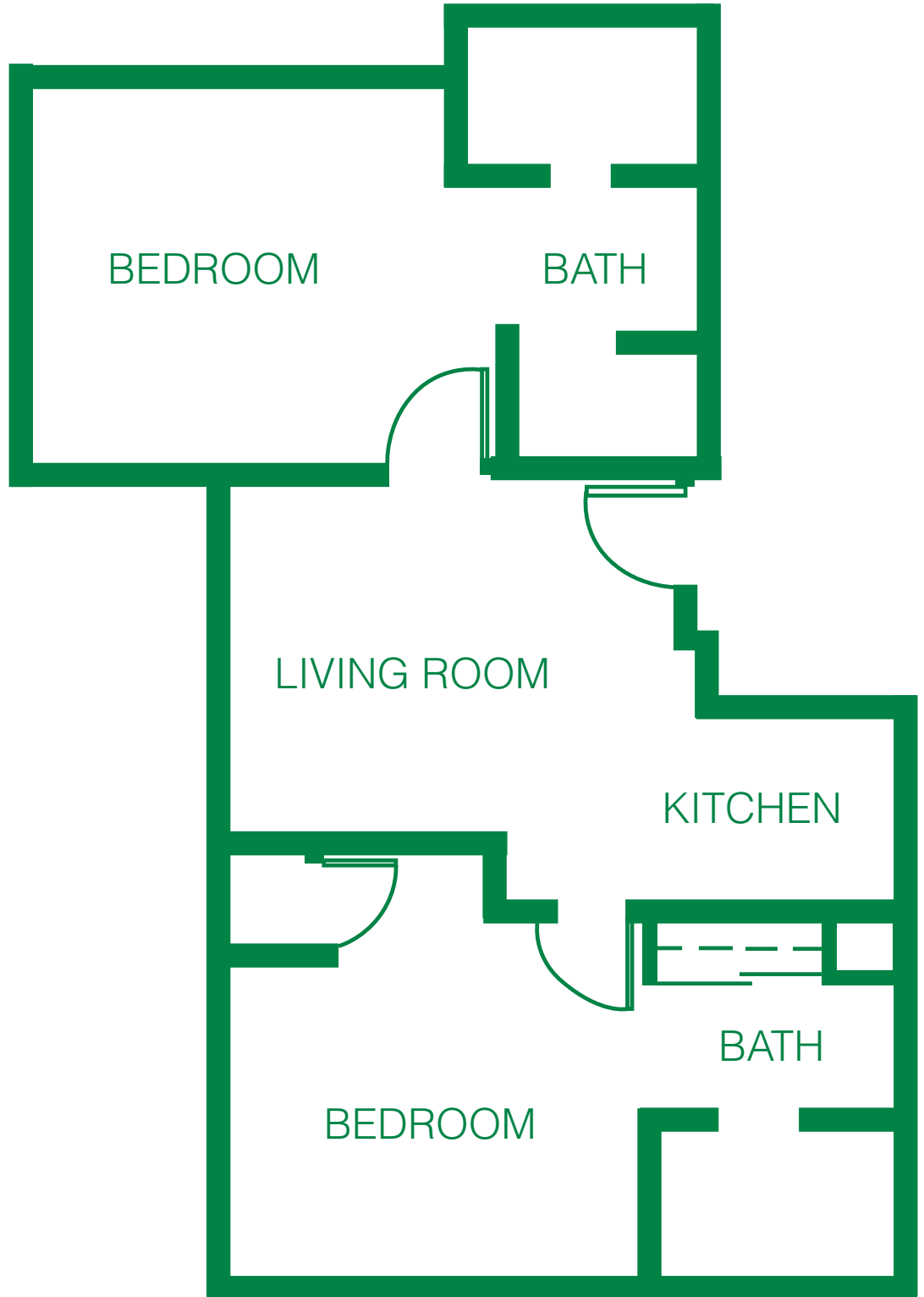


Gentry Park Orlando  
ASSISTED LIVING & MEMORY CARE

# Assisted Living Private Residence

## Wisteria

Companion Suite  
Two Bath 808 sq. ft.



[GentryParkOrlando.com](http://GentryParkOrlando.com)

3201 Center Pointe Drive | Orlando, FL 32825  
Information Center | 1802 N. Alafaya Trail | Orlando, FL 32826  
(407) 382-1002 | email: [Info@GentryParkOrlandocom](mailto:Info@GentryParkOrlandocom)

Managed by  Life Care Services™

